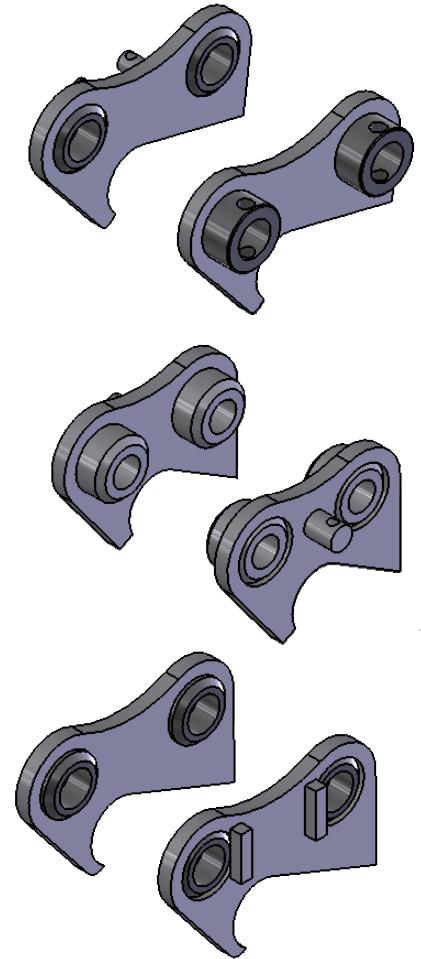


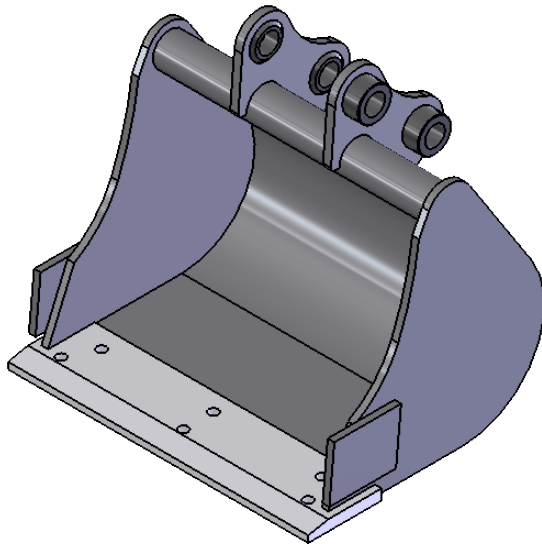
PIN RETENTION OPTIONS:
How do your bucket pins lock off?





- A. Dipper Gap
- B. Bucket Link Gap
- C. Pin Centres
- D. Dipper Pin Diameter
- E. Bucket Link Pin Diameter
- F. Boss Width (LH)
- G. Boss Width (RH)
- H. Locking Hole Centre

Provide ALL above dimensions & fax or email form back to us:

1. Please supply all dimensions in mm.
2. Please also indicate pin retention type.
3. Provide dimensions "X" and "Y" where requested.



UNLESS OTHERWISE SPECIFIED: DIMENSIONS ARE IN MILLIMETERS SURFACE FINISH: TOLERANCES: LINEAR: ANGULAR:			FINISH:		DEBUR AND BREAK SHARP EDGES		DO NOT SCALE DRAWING		REVISION	
										
			NAME		SIGNATURE		DATE		TITLE:	
DRAWN							05 May 2017 08:40:01			
CHK'D										
APPV'D										
MFG										
Q.A							MATERIAL:		DWG NO.	
									<h1>Bucket Fit</h1>	
							WEIGHT:		SCALE:1:10	
									SHEET 1 OF 1	